

Visual and Interactive Analytics

Fulfilling the Promise of Business Intelligence

White Paper

Powerful Visual Techniques for Exploring and
Analyzing Quantitative Business Data



Stephen Few
Principal, Perceptual Edge

About the Author

Stephen Few has 24 years of experience as an IT innovator, consultant, and educator. Today, as Principal of the consultancy Perceptual Edge, Stephen focuses on the use of data visualization for analyzing and communicating quantitative business information.

ii We supposedly live in an “information economy,” yet businesses, the brokers of this economy, rarely serve as good models for the effective use of information. Far too often, business decisions are made without sound thinking to understand the available information and without clear communication of its message to decision makers. This problem undermines the ability of businesses to operate effectively, yet it is rarely diagnosed and almost never treated. Stephen is working to raise consciousness and to provide a treatment plan that addresses the needs of business in the language of business. His book, *Show Me the Numbers: Designing Tables and Graphs to Enlighten*, is a powerful fitness program designed to target the data presentation aspects of this problem. His new book due out in January 2006, *Information Dashboard Design: The Effective Visual Display of Data*, applies visual design practices specifically to the challenging task of displaying a great deal of disparate information on a single screen in a way that communicates clearly and efficiently.

Today, from his office in Berkeley, California, Stephen provides consulting and training services, writes the data visualization newsletter and Blog for the Business Intelligence Network (www.B-EYE-NETWORK.com) as well as frequent articles for *DM Review* and *Intelligent Enterprise*, speaks frequently at conferences, and teaches in the MBA program at the University of California in Berkeley. More information about his current work can be found at www.perceptualedge.com.

Visual and Interactive Analytics

Information technology hasn't delivered what it promised us. Yes, we live in the information age, and yes, much has changed—but to what end? Do you know more today than before? Are you smarter? Do you make better decisions? We often still make the same bad decisions, but now we make them much faster than before, thanks to technology's questionable gift of "more and faster". This is hardly the better world that we imagined and hoped for.

For many years I've worked in the business intelligence (BI) industry. It is BI's mission to help businesses harness the power of information to work smarter. Intelligence—"the faculty of understanding" (according to the Oxford English Dictionary)—is the solid ground on which businesses must build to succeed. Information is the stuff with which intelligence works to produce the understanding needed to effect change, but more data delivered faster can actually lead to less understanding and even bad decisions if we lack the skills and tools needed to tame and make sense of it. The BI industry has helped us build huge warehouses of data that we can now access at lightening speeds, but most of us look on with mouths agape, feeling more overwhelmed than enlightened.

The Gartner Group coined the term business intelligence in the mid-1990s and defined it as follows:

An interactive process for exploring and analyzing structured and domain-specific information to discern trends or patterns, thereby deriving insights and drawing conclusions. The business intelligence process includes communicating findings and effecting change.

The BI industry often loses sight of this clear vision. In many ways, BI is still a fledgling industry, awkwardly struggling with good intentions to mature beyond adolescence, past the flexing and preening of raging hormones, to the responsible solution provider that it has always strived to become. The time is right for BI's rite of passage into adulthood. Some software companies, like Spotfire, are showing the way. Some companies (I'll resist the temptation to name names) are still trying to get by on their good looks, flirting with the sad possibility of never growing up.

The "I" of BI—intelligence—can only be achieved by fully engaging the half of human-computer interaction that possesses intelligence: the human half. BI is only as effective as its ability to support human intelligence. This requires software that seamlessly interacts with our brains to support and extend our cognitive abilities. Unfortunately, BI software too often gets in the way, interrupting and undermining the thinking process rather than complementing and extending it. When BI software does its job, however, you find yourself submerged in thoughts about the data, not about the software and the hoops you must jump through to reach insight.

An interactive process for exploring and analyzing structured and domain-specific information to discern trends or patterns, thereby deriving insights and drawing conclusions. The business intelligence process includes communicating findings and effecting change.

(Source: A glossary on the Web site www.gartner.com)

As a business person trying to get the job done, your only concern when dealing with data is: “what does it mean?” so you can move on the whole point of the matter, which is to decide: “what should I do about it?” That’s it. Did you know that there are experts who spend all their time figuring out the most effective ways to make sense of information to support good decisions? It’s true. While you’re sitting in your office or cubicle doing your job, they are sitting in their offices or cubicles in research laboratories, most at universities and a few at commercial enterprises, doing their best to help you. Their findings get published, but rarely anywhere that you would ever see.

This is where people like me come in handy. I try to keep one foot planted firmly in the business world and the other in the research world so that I can pass useful information back and forth between the two. Researchers must hear what you really need down there in the trenches of everyday business, and you need their insights without all that high-fallutin’ academic speak that keeps too many good ideas trapped in the ivory tower.

I was recently involved in an email discussion with my friend and colleague, Ben Shneiderman, of the University of Maryland. Ben is not just any old academic involved in information visualization research; he is a prime mover in the field. No one has done more to further this work and promote its worth. Ben and I have been exploring ways to strengthen the bridge between the information visualization research community and commercial business software. We realize that if information visualization sounds too academic, many business people will find it alienating. This mustn’t be, because many of these visual analysis techniques are quite easy to learn and can be used to do the kinds of data analyses that are commonly required in business. In an effort to remove some of the academic stigma, Ben and I have been playing around with new names for the application of information visualization in a practical way to the everyday needs of business,

which is how the term “BizViz” came to be. Ben suggested “BizViz” along with a few other names, and this is the one that we both agreed to use to get your attention and tempt you to try something new that we know is good for you.

In this paper I’ll do my best to introduce you—people who must make sense of information to solve real business problems—to a few simple data analysis techniques that you can use to discover meaning in your data that might otherwise remain invisible using more traditional approaches. I’ll use Spotfire DecisionSite, a popular visual analytics software package, to illustrate these techniques. All of these techniques leverage the strength of our most powerful sense: vision.

I See

Because vision is our dominant sense, the acts of seeing and thinking are intimately connected. It is not an accident that we use expressions like “I see” to describe the experience of understanding. In fact, almost every word we use to describe understanding, including insight, illumination, and enlightenment, are visual metaphors. Of all the sense receptors in the human body, 70% are located in our eyes. Not only does vision offer a richer, more nuanced perception of the world around us than our other senses, it does so through a significantly broader bandwidth at much higher speeds of delivery. Researchers focus primarily on developing visual methods of exploring and representing information because this is the channel that can deliver the richest perception possible, resulting, when done effectively, in the richest understanding. To fulfill its promise, BI software must incorporate visual analysis methods—not just any visual analysis methods, but those that actually work.

Information visualization—technologies that support the analysis and communication of data using visual media and techniques—should not be seen as separate from BI. As the Gartner Group’s definition of BI made clear, when data visualizations are used to support an “interactive process for exploring and analyzing structured and domain-specific information to discern trends or patterns”, they are doing precisely what BI is meant to do. When used effectively, visualization software extends the reach of traditional BI to new realms of understanding—not as one means among many, but often as the only effective means available. Information visualization will enable the next leap in BI’s evolution.

All BI software vendors have recognized the appeal to their customers of graphical data displays, but few understand their value; few understand what works and what doesn’t, let alone why. Nothing illustrates this more vividly than the current popularity of dashboards. Like a feeding frenzy among sharks, vendors sensed the potential market of dashboards and surged in with bloodlust to devour as much as possible, as quickly as possible, without taking the time to understand it. Rather than stepping back and asking why these single-screen consolidations of information for rapid monitoring of what’s going on were so appealing, they assessed the situation superficially and began to compete with one another in an absurd display of flash and dazzle. Vendor after vendor rushed to awkwardly clomp down the fashion runway to show off their flashy meters, gauges, and traffic lights while buyers sat mesmerized by the gaudy spectacle. This will change in time as this market matures and a critical mass of unhappy customers rebels against these superficial dashboard displays that fail to communicate. Dashboards, like other visual media for communication of information, have tremendous potential, but only when properly designed to connect and interact with our eyes (how we see) and our brains (how we think).

To harness the power of visual analysis and communication, BI vendors must take the time to do two things that they often overlook:

1. Explore and think about the useful human ends that their technology should support until they clearly, accurately, and fully understand them.
2. Study the research findings that will teach them how to address these human ends through the use of technology in ways that actually work.

In the case of dashboards, this involves focus on the communication ends that are the exclusive purpose of dashboards, along with a study of the rich research literature that describes how visual perception works and how information displays must be designed to take advantage of this powerful and efficient channel of communication. BI vendors need to dig themselves out from under the overwhelming demands for features and functions that keep them frenzied trying to bolt things onto their products as quickly as possible. They must lift their heads above the fray long enough to remember that they are supposed to be the experts who bring a clear and commanding vision to the design of BI products. Customers are responsible for describing their needs—the business ends that they need to achieve. Software vendors are responsible for expertly designing technology that supports these needs in ways that really work. Given the central goal of BI to help business people make sense of information to enable smart decisions, BI vendors need to be experts in the visual techniques that alone can enable much of the data discovery and analysis that businesses require.

If you’re one of those folks who consider themselves more verbal than visual, and are therefore uninterested in visual analysis because it doesn’t speak your language, I’ll let you in on an important truth: despite your personal preference for verbal over visual information displays, some of the messages that are contained in data are visual by their very nature, and therefore remain

hidden or difficult to see at best when presented verbally (that is, as text, such as in a tabular display). I'll illustrate this point very simply. Take a look at the following table (Figure 1) of time-series sales data for two regions: domestic and international.

	Jan	Feb	Mar	Apr	May	Jun	Jul	Aug	Sep	Oct	Nov	Dec
Domestic	1,983	2,343	2,593	2,283	2,574	2,838	2,382	2,634	2,938	2,739	2,983	3,493
International	574	636	673	593	644	679	593	139	599	583	602	690

Figure 1

This table does a marvelous job of giving you precise values and makes it easy to look up a particular value or even compare individual values to one another, but there's a bigger picture that isn't obvious in this tabular display. I use the word "picture" to describe this message in the data, because it is hard to discern except in the form of a picture.

Now look at the same exact data (Figure 2) displayed graphically. Previously veiled aspects of the data now pop out clearly and immediately, recognizable and understandable without effort.

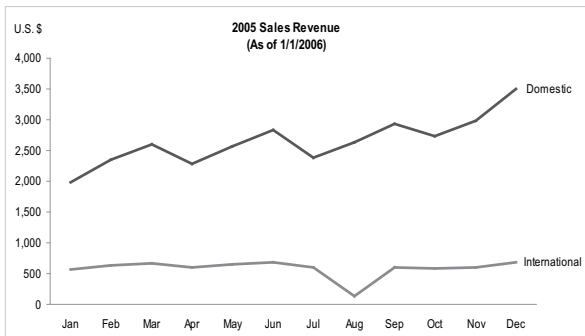


Figure 2

Here are a few of the facts that are clearly visible in this graph:

- Domestic sales are trending upwards overall through the year.
- International sales hold reasonably steady throughout the year, except in the month of August (vacation month in Europe), when they dip.
- Domestic sales fluctuate quite a bit, and with a moment's attention, we see that they fluctuate in a pattern that is cyclical per quarter. They drop in the first month of each quarter and then steadily rise to a dramatic peak in the last month of each quarter.

Even though each of these patterns could have been discerned from the table given enough time and attention, they certainly could not have been discerned so quickly and easily. Even if you favor text displays, being verbally oriented like I also tend to be, you can't afford to ignore visual representations when looking for messages that are contained in the shape of the data.

Even the federal government has recognized the potential of visual analytics. A new government program is establishing regional research centers at universities throughout the country to develop visual techniques and tools for exploring and making sense of data (see <http://nvac.pnl.gov>). Funded primarily by the Department of Homeland Security, but available for participation by all government agencies, these research centers are bringing together academic, commercial, and government talent to leverage the power of visual analytics for greater insight by those who make the decisions that affect our national interests. Their motto is "detecting the expected...discovering the unexpected." I doubt that this program would exist if the potential benefits of visual analytics were not beyond question.

A Brief History of Information Visualization

To fully appreciate what information visualization is and what it offers, it's worthwhile to quickly trace the historical highlights (Figure 3).

The tabular presentation of data has been with us since the 2nd century, when it was first used in Egypt to organize astronomical information and to aid navigation. The representation of quantitative data in the form of two-dimensional graphs, however, didn't arise until much later, in the 17th century. Rene Descartes, the French philosopher and mathematician famous for the words "Cogito ergo sum" ("I think therefore I am"), invented 2-D graphs using X and Y axes, not originally for presenting data, but for performing a type of mathematics based on a system of coordinates relative to the axes. It wasn't until

the late 18th and early 19th centuries that many of the graphs that we use today were invented or dramatically improved by a Scottish social scientist named William Playfair, including bar charts and pie charts. Over a century passed, however, before the value of these techniques was sufficiently recognized for the first university course in graphing data to be offered, originally in 1913 at Iowa State.

The person who really recognized the power of visualization as a means to explore and make sense of data was the Princeton statistics professor John Tukey. In 1977, Tukey introduced a whole new approach to analyzing data called exploratory data analysis. Later, in 1983, data visualization guru Edward Tufte, published his

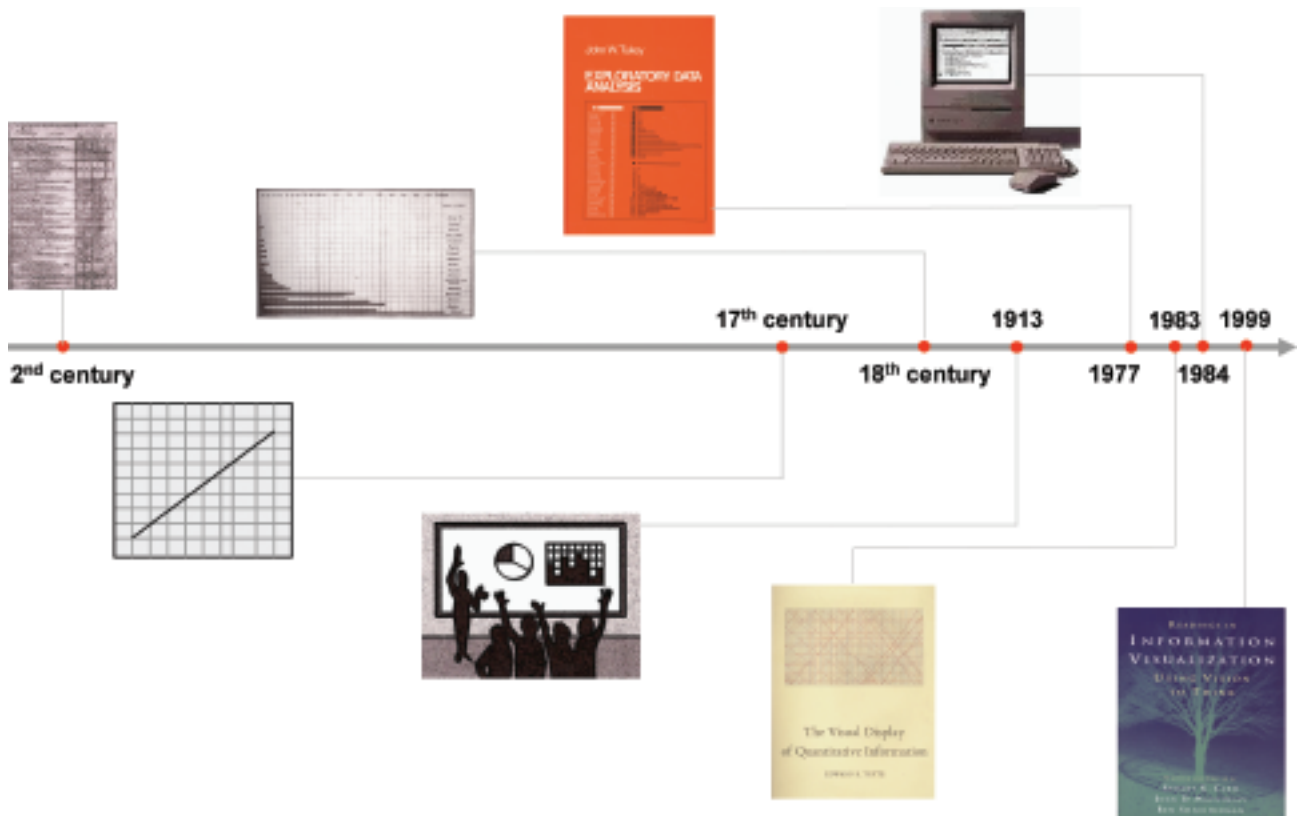


Figure 3

groundbreaking book *The Visual Display of Quantitative Information*, which showed us that there were effective ways of displaying data visually and then there were the ways that most of us were doing it, which did not communicate very well. One year later, in 1984, while watching the Super Bowl, Apple introduced us to the first popular and affordable computer that emphasized graphics as a mode of interaction and display, a graphical user interface (GUI) that was originally developed at Xerox PARC (Palo Alto Research Center). This paved the way finally for the use of data visualizations that were interactive.

Given the availability of affordable computers with reasonably powerful graphics, a new research specialty emerged in the academic world, which was coined "information visualization." In 1999, the book *Readings in Information Visualization: Using Vision to Think*, collected the best of this work into a single volume and made it accessible for the first time beyond the walls of academia. This book was co-authored by Ben Shneiderman, Stuart Card, and Jock Mackinlay. In it they told us what they meant by the term information visualization by providing the following definition:

Information visualization is the use of computer-support interactive visual representations of abstract data to amplify cognition.

Information visualization is the use of computer-support interactive visual representations of abstract data to amplify cognition.

This definition places information visualization smack dab in the middle of business intelligence. It's worthwhile to break it apart to highlight and clarify each of its components:

- **Computer-supported:** The visualization is displayed by a computer, usually on a computer screen.
- **Interactive:** The visualization can be manipulated directly and simply by the user in a free-flowing manner, including such actions as filtering the data and drilling down into details.
- **Visual representations:** The information is displayed in visual form using attributes like the location, length, shape, color, and size of objects to form a picture of the data and thereby reveal patterns, trends, and exceptions that might not be seen otherwise.
- **Abstract data:** Information such as quantities, processes, and relationships, as opposed to visual representations of physical objects, such as geography (that is, a map) or the human body (for example, an MRI image).
- **Amplify cognition:** These visualizations and the interactions they enable extend our ability to think by assisting memory and representing the information in ways that our brains can easily comprehend.

This is precisely what we need.

Simple Information Visualization Techniques for Business Intelligence

Information visualization research has produced a wealth of useful techniques for discovery and analysis, but a few stand out as especially simple and effective means to analyze quantitative business data. I'm going to describe and demonstrate four techniques that you can use today:

1. Filtering data directly and instantly
2. Extending your view to more dimensions using multiple comparative graphs
3. Viewing data from multiple complementary perspectives simultaneously
4. Highlighting subsets of data simultaneously and automatically in multiple views

Filtering Data Directly and Instantly

One of the most common steps that you take over and over again when examining and trying to make sense of data is that of filtering. Whenever you see something interesting, you need to take a closer look at it without the distraction of other data, so you filter out the data that isn't relevant to your immediate interest. This is part and parcel of the data analysis process—nothing new—but the way that filtering is done with most traditional BI software is clumsy and tends to interrupt the free flow of analysis.

Here's how this process typically goes using traditional software: (1) you examine your data in a graph and notice something interesting, (2) you turn away from the data to construct a query to filter the data and then you run the query, (3) you wait for the query to return the filtered results, (4) you construct a new graph to view the filtered data, and (5) you turn back to the data to examine it in its new form. This fragmented process introduces an annoying stutter into your thinking process and can act as a disincentive to inquiry and exploration. It slows you down and sometimes causes you to lose your train of thought.

Wouldn't it be helpful if you could filter the data in a way that didn't require you to take your eyes off of it and allowed you to see the effects of the filtering process as it's happening, without delay? Information visualization researchers recognized this need several years ago and have worked hard to provide solutions, which they call dynamic queries.

Let's look at this in the context of a real-world analysis of business data. Imagine that we are responsible for making sense of our company's sales. We sell five different wines to retailers and have a particular interest in the sales of Merlot. We have the data to examine sales of Merlot across two years compared to overall wine sales, distributed across four regions (WE, MW, NE, and SW), thirty territories (1-30), and three customer types (large, medium, and small), to name a few of the available items. (Note: The data that we'll be using is not real, but was created for the purpose of demonstration only.) Now, let's focus on Merlot's percentage of overall sales in each of the two years across the four regions by displaying it as a simple bar graph (Figure 4).

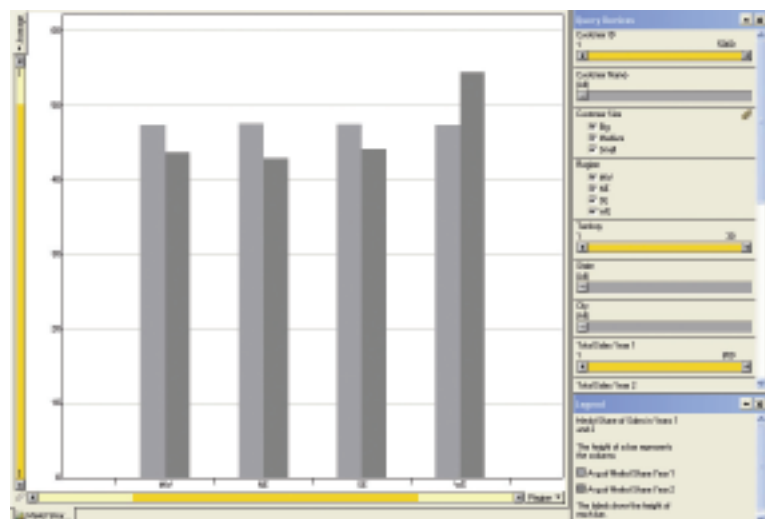


Figure 4

It only takes a second to notice that Merlot's share of overall sales has decreased from year 1 to year 2 in all but region WE (west). This leads us to wonder if this pattern holds true for all types of customers—big, medium, and small. Notice that to the right of the graph there is a panel labeled "Query Devices". This panel includes simple mechanisms for filtering the data, one for each column that is available (Customer ID, Customer Name, Customer Size, etc.). Let's focus for now on the query device for the Customer Size column. Because Customer Size is a categorical variable—one that consists of a limited set of discrete rather than continuous values—the query device is in the form of a check box for each of the values. Right now, each value is checked, but if we want to quickly see Merlot's share of sales for big customers only, we can easily uncheck medium and small [highlighted in red below (Figure 5)] to view the following result:

The general pattern holds true for big customers, but the decrease of Merlot's share in the SE (southeast) region is not as pronounced. What you couldn't see, because you're reading my explanation of this process rather than doing it yourself and seeing what happens, is that there was no delay between making filtering selections and seeing the results in the graph. For this same reason you also might not be able to fully appreciate the fact that this act of data filtering

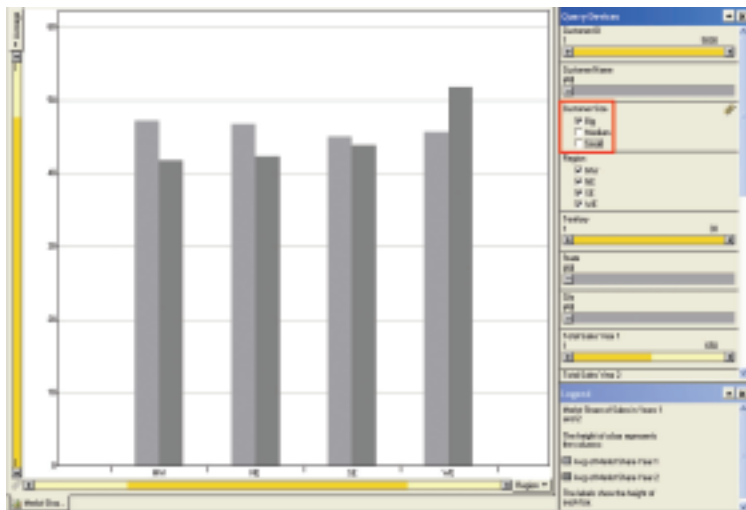


Figure 5

was very convenient. There was no disconnection between wondering what the pattern might look like for big customers alone, filtering the data, and seeing the result. It involved a fluid interaction of thought and action.

Let's pursue this line of investigation further by filtering out all but the west region to see if all states in this region display a similar pattern. Because we're focusing on the change in Merlot's share from year 1 to year 2, we'll change the graph to show a single bar per state that measures the amount of change, rather than a separate bar for each year. Here's what the data looks like now (Figure 6).

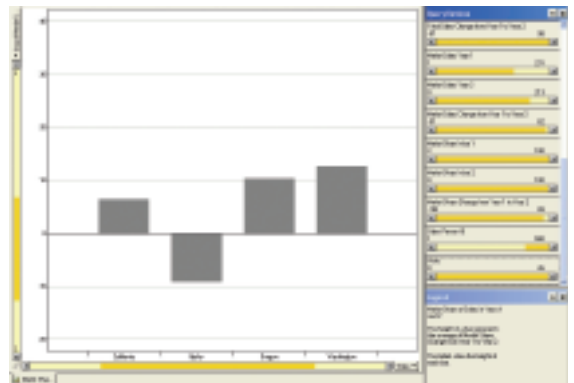


Figure 6

Of the four states in the west region, Idaho stands out as an exception to the pattern of an increase in Merlot's share. Now let's use the query devices to do something interesting. One of the measures that is available in our data is the number of visits that were made by our sales team to each of the customers in the second year. Let's see if there is a relationship between the number of visits and the fact that Merlot's share decreased in Idaho. The query device for the number of visits is displayed in the form of the slider, shown below (Figure 7):



Figure 7

This type of slider, with a control at each end, allows you to easily set the range of values that you want to see to any range you want. Notice that the low and high ends of the slider are labeled with the values 0 and 26, which indicates the entire range of values in the number of visits measure. To filter the data based on the number of visits, in most BI software you would have to define the range, submit the query, and wait for the results, but with this slider, we can adjust the range dynamically and see the results change in the graph as we do so. For instance, we can adjust the slider to include only those customers who received one or more visits, then two or more visits, and so on, seeing the results of each adjustment in the graph as we proceed. Nothing much happens when we adjust the slider from one or more visits through three or more visits, but look at the change that occurs below from left to right when we adjust the slider from four or more visits to six or more visits (Figure 8):

With five or more visits (middle graph), the change in Merlot's share increased a little in California and Oregon, but with six or more visits (right graph), Idaho disappeared altogether. In other words, none of the customers in Idaho received more than five visits from the sales team out of a maximum of 26 visits that some customers received. Being able to see the data change in the graph as we're filtering it caused this meaningful aspect of the data to leap out.

Dynamic queries, enabled through simple filtering controls like sliders, offer an enormous

advantage when exploring data. It is so easy to do, you needn't take the time to construct fully formulated queries before pursuing a line of inquiry, but can approach the process more improvisationally, as an effortless series of thoughts, actions, and observations.

Extending Your View to More Dimensions Using Multiple Comparative Graphs

You might have noticed how helpful it was to see multiple instances of the same graph all at once in Figure 8 below, each representing a different value of the number of sales visits variable. This technique of arranging a consistent series of the same graph, differing only along a single variable (in this case, number of visits), all within eye span so they can be compared to one another is a powerful way to add another dimension to the data that would be difficult to display in a single graph. In 1983, data visualization guru Edward Tufte called this technique "small multiples", but it goes by other names as well, including a trellis display, which is what Spotfire calls it. When multiple graphs are arranged in this way, especially as a full matrix including multiple columns and rows of graphs, it looks a bit like a trellis that might be found in your garden. Very few software vendors make it easy to arrange graphs in this manner, despite the value of this technique for analysis and the fact that it has been around for over 20 years.

You can use this kind of display to see a great deal of data in a way that causes interesting facts

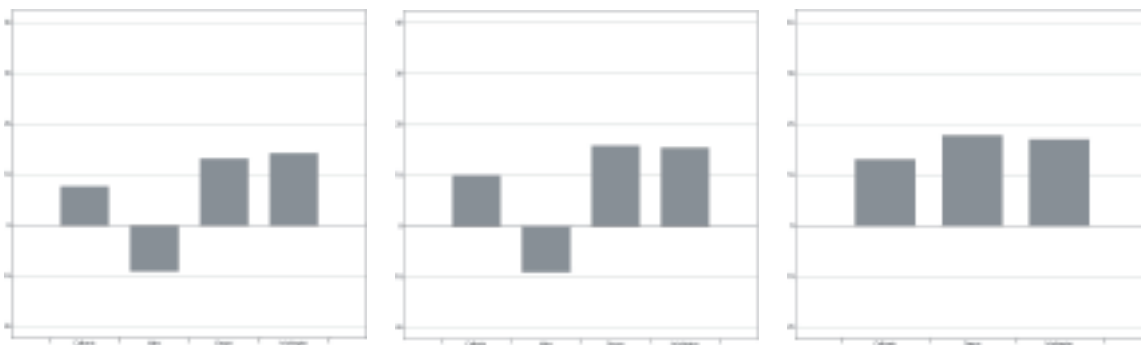


Figure 8

to jump out that might otherwise remain hidden. Let me illustrate using an example that includes 50 graphs—one for each state—as well as the amount of change in total sales (black bars) and Merlot sales (gray bars) separately for big, medium, and small customers (Figure 9).

Obviously, a display like this isn't designed for precise comparisons between individual values, but rather for seeing the big picture such that anomalies can surface. My eyes are drawn to a few interesting facts in this display:

1. Overall wine sales to small customers in Delaware increased dramatically, but Merlot sales decreased.
2. Merlot sales in New Hampshire decreased dramatically among big customers but increased by about the same degree among medium-sized customers.
3. Overall wine sales took a dive in Mississippi among big customers, yet Merlot sales still managed to increase a bit.
4. We didn't sell any wine whatsoever to big customers in Montana.
5. In Washington, Merlot sales increased significantly among customers of all sizes, and did so to a greater degree than overall wine sales.

More can be found with a little study, but this is enough to make the point: interesting data can be rapidly detected using a series of related graphs that can all be seen within eye span that might never be found if you were forced to examine the same data one graph at a time.

Viewing Data from Multiple Complementary Perspectives Simultaneously

Multiple graphs can be displayed together in another way that is also quite powerful for analysis. Entirely different views of the same data, with each table or graph showing the data from a different perspective, can be quite revealing when they are seen together.

One of our most fundamental limitations when analyzing data resides in short-term memory. This is that part of memory that is active when we are consciously thinking about something. No more than four to eight chunks of information can be held in short-term memory at any one time. Traditional BI methods of analysis are often so fragmented that significant observations have already been forgotten by the time we make our next observations, which means that we cannot compare them to one another. Most of the

insights that we gain through analysis come in the form of comparisons. Consequently, good data analysis software needs to compensate for the limits of short-term memory, primarily in two ways:

1. By organizing meaningful data into larger chunks so that the four to eight chunks of information that we can hold in short-term memory at any one time are as rich as possible.
2. By placing as much of the data that we need to compare within eye span so we don't need to keep it all in short-term memory to make the comparisons.

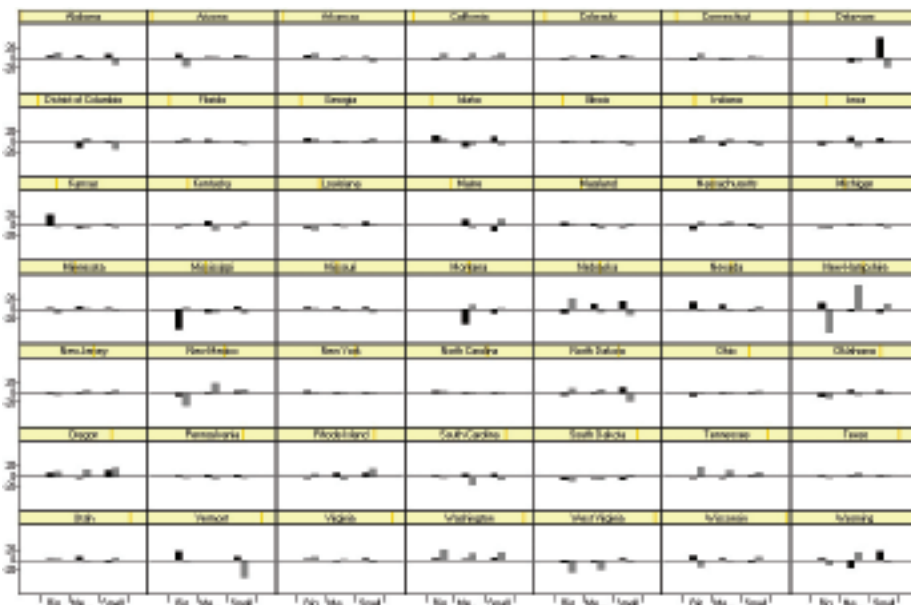


Figure 9

Remember the table of numbers in Figure 1? Each of the 24 numbers represents a chunk of information when held in short-term memory, which means that only a handful of them can be considered at any one time. The graph of the same data in Figure 2, however, represents the values for each category (domestic and international sales) as a single line in the graph—a visual object that we can hold in short-term memory as a single chunk of information. This is one of the reasons that graphs are such a powerful medium for the analysis of data.

When comparisons need to be made between different values, sets of values, or views of the data, they need to be available to our eyes at the same time. Nothing needs to be held for long in short-term memory when it is all there before our eyes and we can quickly swap the chunks that we need in and out of memory as we're making connections and considering what they mean. Software can support this need by allowing us to place several different data displays on a single screen. Let's look at a rich assortment of perspectives on the same set of sales data that we've been exploring (Figure 10).

Starting with the graph in the upper left-hand corner and working down each column before moving right to the next, here's what we see:

1. Total wines sales (black bars) compared to Merlot sales (gray bars) in U.S. dollars for this year per region.
2. Percentage change in sales between last year and this year—total and Merlot—per region.
3. Merlot's percentage of total wine sales per region.
4. Change in Merlot's percentage of total sales from last year to this year per region.

5. Total wine sales this year per customer size (darkest gray represents big customers, medium gray represents medium-sized customers, and light gray represents small customers) by region.
6. Merlot sales this year per customer size by region.
7. Merlot share of total sales this year per customer size by region.
8. Frequency distribution of sales based on the number of sales visits that led to each sale (0-3, 4-7, 8-11, etc.).
9. Scatter plot showing the correlation of the percentage change in total wine sales from last year to this year (vertical axis) to the percentage change in Merlot wine sales from last year to this year (horizontal axis).

Each of these graphs provides a different perspective on our sales. Seen together, they help us see connections (interesting interactions) between various aspects of sales. Study these graphs for a few minutes to see what worthwhile stories they tell you about sales. Here are a few thought-provoking features of the data that caught my attention while examining these graphs:

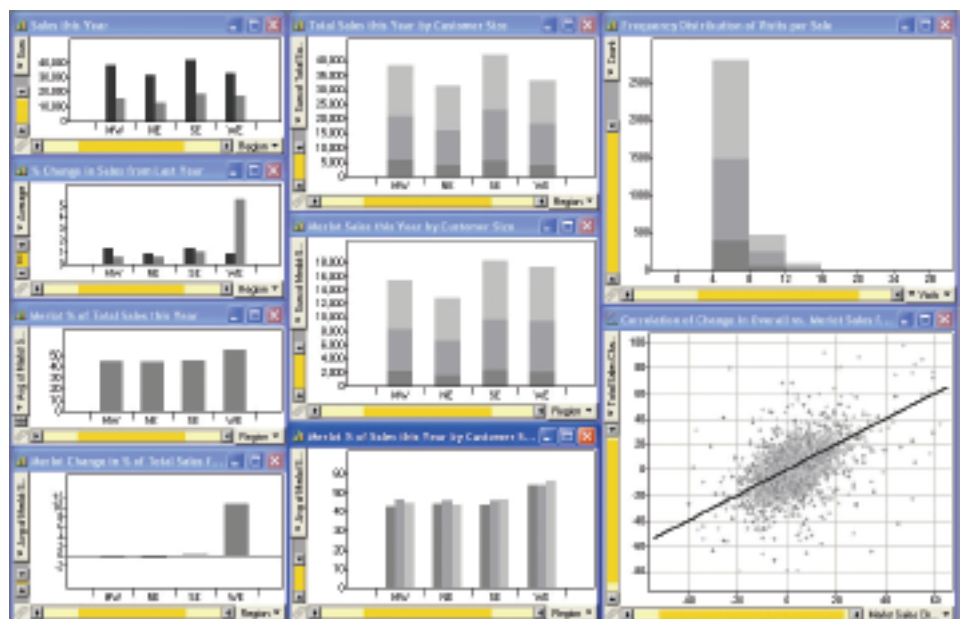


Figure 10

1. Merlot sales in the west region represent around 55% of total sales, the greatest share of any region, but this is mostly due to a dramatic increase in Merlot sales in the west. Despite this strong showing in the west, Merlot's share of total wine sales actually went down a little in the midwest and northeast and increased only slightly in the southeast. Merlot's high share of total sales in the west is strongest among small customers.
2. Even though the west barely beat the northeast in overall wine sales this year to come in third place of the four regions, they came in a strong second in Merlot sales, nearly catching up with southeast. In fact, Merlot sales to medium-sized customers in the west roughly match those in the southeast.
3. Most sales resulted from between three and seven visits to a customer and the number of visits that seems to be required for sales is fairly consistent between big, medium, and small customers.
4. While there is a positive correlation between changes in total wines sales vs. Merlot sales from last year to this year (that is, as total wine sales increased or decreased, Merlot sales tended to do the same), there are a number of exceptions to this pattern, especially in the lower right corner where a disproportionate number of Merlot sales increases appear relative to decreases in overall sales.

Many of these discoveries, as well as others you perhaps made while examining this collection of complementary graphs, might have remained invisible using more traditional BI methods of analysis, and certainly would have been much more difficult and time-consuming to ferret out.

Highlighting Subsets of Data Simultaneously and Automatically in Multiple Views

This next technique builds on top of the one we just examined. The revelatory power of multiple perspectives on the data seen together can be extended through a technique that information visualization researchers call brushing. Let's say that we are looking at one of the graphs in Figure 10 and we become interested in a particular subset of the data, such as those Merlot sales that decreased since last year even though overall wines sales increased, as shown in the upper left quadrant of the scatter plot. Now imagine that we have a brush that we can use to paint a rectangle around these particular data points in the scatter plot to highlight them, resulting in the following (Figure 11):

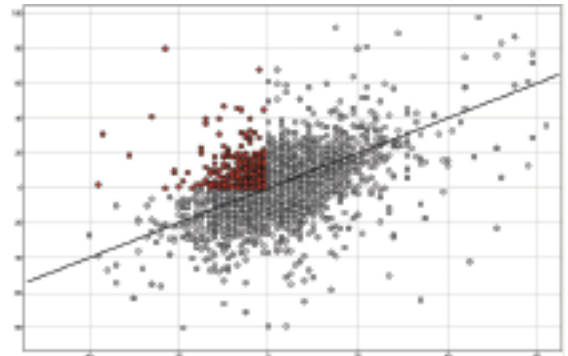


Figure 11

Now all the values of overall wine sales that are greater than zero corresponding to Merlot sales that are less than zero are highlighted in red. Simply making them stand out in the scatter plot, however, is not the point of this exercise. What we really want to see is how this particular subset of data behaves in all of the other graphs on the screen. That's exactly what brushing does for us, and it does it automatically. Take a look now at the full screen and see if it leads you to any interesting insights (Figure 12).

One of the first things that I noticed is that these decreases in Merlot sales that are out of sync with corresponding increases in overall wine sales, occurred less often in the west (especially seen in upper graph in the left column and the middle graph in the center column). Relative to customer size, this pattern also seems to be disproportionately strong in the southeast (see the top and middle graphs in the center column).

Now let's say that we want to see if sales in the west fall disproportionately in any particular area of the scatter plot. To see this, we can brush the west region in any of the graphs in the left or center columns and see the results highlighted in every graph, including the scatter plot shown below (Figure 13).

Notice that a disproportionate number of sales in the west (highlighted in red) appear below the trend line and in the right half (increases in Merlot sales) of the graph. This reaffirms our previous observation that the west has contributed more than other regions to increases in Merlot sales, especially when overall wine sales changed less than the average degree.

Final Word

Even with this simple data set, we could go on for hours pursuing lines of investigation as quickly as they come to mind. When the kinds of analytical functionality that we've just examined are enabled by software in such simple and efficient ways, the step-by-step process that begins with observation, then raises a question,

and is followed by manipulation of the data to pursue that question, resulting in new observations and insights, becomes fluid, without interruption. When this happens, we can achieve a state of awareness and insight that psychologist Mihaly Csikszentmihalyi (pronounced "chick-sent-me-high") calls "flow" and others more colloquially call being "in the zone." This can only happen when our awareness of the software we are using recedes into

the background and we become fully immersed in the data and its rich story.

With the right tools you can clear the fog and learn to analyze data at the speed of thought. Take advantage of the techniques that information visualization researchers have developed to help you work smarter. Achieve the promise of business intelligence today.

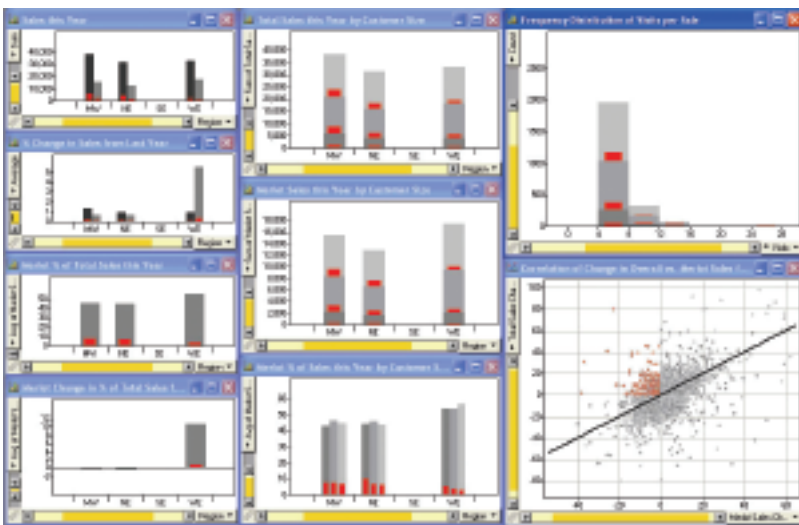


Figure 12

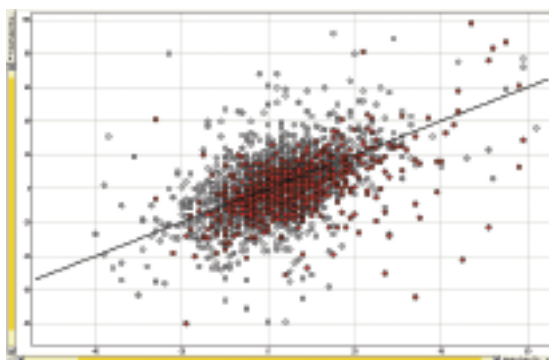


Figure 13



About Spotfire

For thousands of business users faced with day-to-day decisions, Spotfire analytics offers the platinum user experience for visually interacting with information. Distinguished by its intuitive ease and analytic power, Spotfire software rapidly reveals unseen threats and illuminates new opportunities, creating unprecedented economic value. Spotfire's customers include industry leaders among the Global 2000 that have deployed Spotfire analytics to gain an information advantage over their competitors. For more information, visit <http://www.spotfire.com>.

Spotfire® DecisionSite®

Spotfire, Inc.
212 Elm Street
Somerville, MA 02144 U.S.A.
Telephone +1.617.702.1600
Fax +1.617.702.1700
Toll-Free +1.800.245.4211

Spotfire AB
(European Headquarters)
Första Långgatan 26
SE-413 28 Göteborg, Sweden
Telephone +46.31.704.1500
Fax +46.31.704.1501

Spotfire Japan KK
(Japanese Headquarters)
Kinokuniya Bldg. 7F, 13-5,
Hatchobon 4-chrome
Chuo-Ku, Tokyo 104-0032 Japan
Telephone +81.3.5540.7321
Fax +81.3.3552.3166

www.spotfire.com

